

# BENIMAR PRIMERO 202

The clever designers of this four-berth have packed a great deal into its neat interior, says Peter Baber



The end-kitchen 202 dropped out of Benimar's budget-oriented Primero range for a while, but it's back for 2025. Not surprising, really, when you consider how many other manufacturers are jumping on the 'end kitchen with drop-down bed' bandwagon these days.

But Benimar is on to something, because in its new format, the Fiat Ducato-based 202 impressed the *Practical Motorhome* judges enough for it to be highly commended in our 'Best motorhome for families' category this year.

The 202 certainly looks proficient as you approach it. There's a locker by the door where you can stash boots before entering, and it's good to see the water inlet and the toilet cassette on the offside, away from any awning.

But it's when you step inside that you begin to see why this 'van should appeal so much to families.

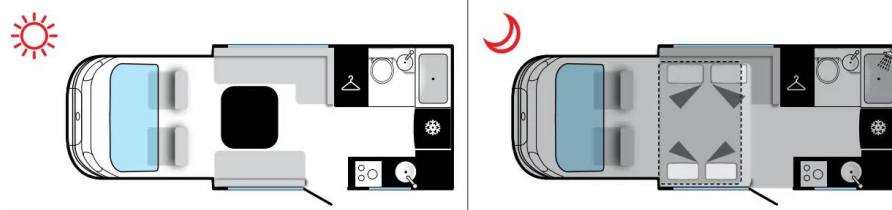
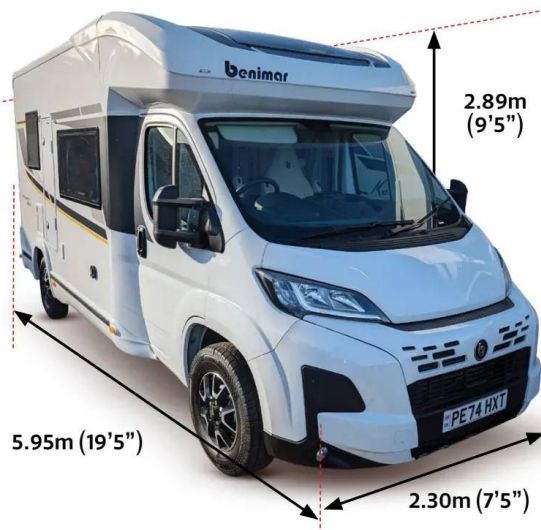
The front lounge, with swivelled cab seats, L-shaped dinette with two travel seats and a huge side sofa, all centred on a large square table, is enormous. You could quite possibly seat nine here.

Thanks to the mostly off-white upholstery, it feels wonderfully airy, even with the drop-down bed above. The big, openable sunroof and large windows also help here.

The pedestal table slides out of the way when not needed, leaving a clear passageway through to the captain's seats in the standard Ducato cab.

There is a mains socket, a USB and a USB-C in the bulkhead immediately behind the driver – just about within reach of the travel seats on a journey. The TV sockets are on the panel behind

**Price** £68,995  
**Sleeps** 4 **Belts** 4  
**Base vehicle** Fiat Ducato  
**Engine** 2.2-litre, 140bhp turbodiesel with six-speed manual as standard  
**Length/width/height** 5.95/2.30/2.89m (19'5"/7'5"/9'5")  
**MTPLM** 3500kg  
**MiRO** 2879kg  
**Payload** 621kg  
**Water (fresh/waste)** 100/105 litres  
**Leisure battery** 100Ah  
**Gas** 2 x 6kg



**Contact** Marquis Leisure **Address** Orchard Works, Willersey, Nr Broadway, Worcestershire WR12 7QF **Web** marquisleisure.co.uk **Tel** 0800 026 7777

the travel seats, but there is plenty of space for a party of four to spread out around the lounge and watch together.

The kitchen runs from the habitation door right to the back of the 'van on the nearside, with masses of worktop, even if most of it is tucked away in the corner beyond the circular sink.

Also in the kitchen you'll find a combined oven and grill, a three-burner dual-fuel hob, and the same fridge with separate freezer that you see in many Benimars. There's no microwave as standard, but because

there are no fewer than three mains sockets near the workspace, it should be possible to take one with you, or even to fit one in an overhead locker.

The washroom opposite is, if anything, even more impressive. Although there is a step up to it, the enormous shower cubicle comes with two drain holes, a large shelf and a clothes-drying rail.

There's a circular handbasin in front of a large window that lets in loads of light, and you still get a rooflight as well. Two mug holders and a towel rail complete the set-up.

up close



Standard Fiat Ducato cab, with captain's chairs that swivel to form the lounge

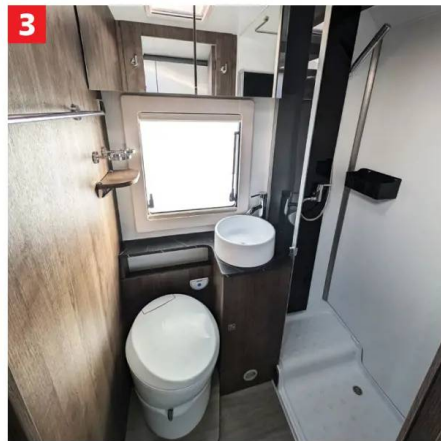


Stash your boots in the handy locker by the door before entering the 'van



The comfortable drop-down bed, accessed by ladder, won't obscure the habitation door





**1** Off-white upholstery helps to make the spacious lounge feel bright and airy

**2** Generous workspace in the kitchen, but no microwave fitted as standard

**3** The washroom is well appointed, with a huge shower cubicle, a big window and a rooflight

The lower bed is easy to make up. You just lower the table electronically (you have to lift the cushions a little), then fold over a flap from the side seat. Only one infill cushion, stored in the garage, is needed to make a big double.

The drop-down bed lowers easily and doesn't really obscure the door. Accessed via a ladder, it gets a reading light, but no separate storage space.

A conventional family-oriented 'van would have a large garage at the back, but because of its end kitchen, the 202 doesn't provide this. Halfway down

the offside, there is an externally accessible cupboard with hanging space - somewhere you could stash a folding bike. It comes with lighting, and 12V and mains sockets, too.

Given the drop-down bed, there is not a lot of opportunity for more storage in the lounge, but the designers have still managed to include a large area under the side settee.

Kitchen storage is very generous, with three overhead lockers and some open shelving above. There's a large locker, with more open space over it,

above the fridge. In the main base unit, you have two large drawers and a locker under the oven.

The washroom includes a double cupboard behind the mirror, and a smaller cupboard under the basin.

**PRACTICAL MOTORHOME SAYS...**

The 202 is an impressive little number. End-washroom layouts are usually mainly for couples, but this vehicle would be easy to transform into a comfortable family 'van, and it is still less than 6m long.



Generous double is made up by lowering the table and folding down the side seat



LEFT Storage includes an externally accessible cupboard...

RIGHT ... which also provides hanging space



Overhead lockers and open shelving offer ample storage in the kitchen